

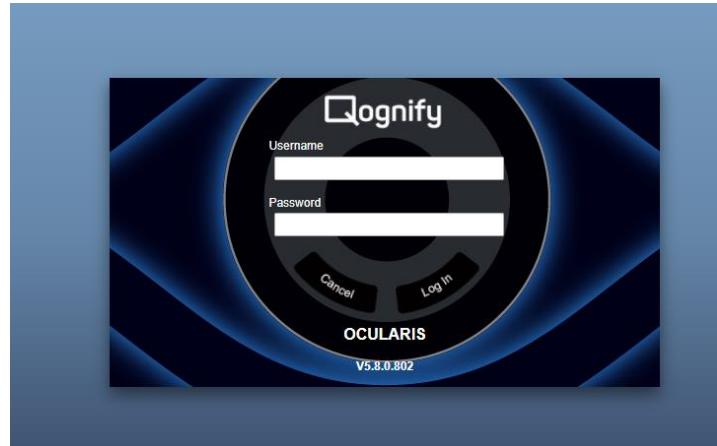
# Ocularis Quick User Guide

## Contents

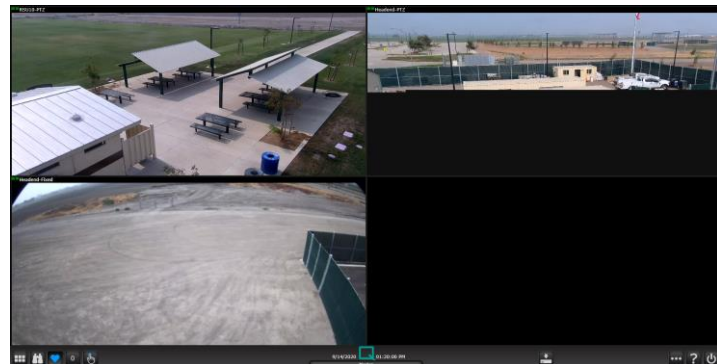
Ocularis Live view .....	3
Ocularis Playback View .....	4

## Ocularis Live view

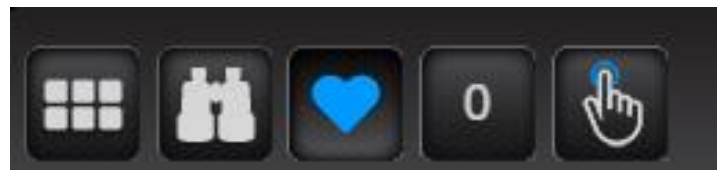
- Log into the system's web interface:
  - Each RSU has a different static IP
- Use login provided



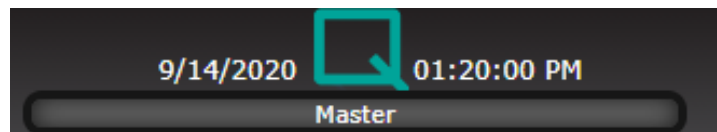
- The last view used will be loaded by default.
- The bottom right corner shows the **live view** and **playback** options. The middle icons show the current date and time.
- The icon to the right of the middle shows any exports ready for download.
- The 3 right most icons are settings, help, and logoff options.
- See below for detailed views



- To open a different view, click the **3x2 grid icon** in the bottom left corner of the screen (placing the mouse over it will give the pop up "Select View")
- The **Binocular** icon to the right will enter playback mode
- The **Heart** icon to the right will enter live view mode.
- The **Number** next to the heart will show any active alerts
- The **Finger** icon will show any triggers, however there are none. These are for access control doors and such
- In live view, this is the current date/time of the system. In playback view this is the date/time of the video currently being viewed.



- In live view, the single button to the right of the time displays the links to download footage. In playback mode it gives the options for selecting the time frame, starting the export, downloading the clip, and viewing the bookmarks created.
- The last 3 icons to the right are options, help, and logoff.
- The 3 dots icon is the "**Options**" menu which lets users choose between aspect ratios, 12/24hr clock, and changing the time zone
- The "?" is the help menu
- The last icon is to **log off** the system



## Ocularis Playback View

- Follow the steps above to log into the system.
- Once logged into the system
  - Use the **3x2 grid icon** to select the view to playback
  - Enter the playback mode by selecting the **Binocular** icon in the bottom left corner



- New icons appear, first is the “**Go to Date/Time**” option which lets users quickly select a date/time to review
- Next is the playback controls
  - Previous sequence
  - Previous frame
  - Play in reverse
  - Playback speed
- The center icons show the date/time of the video currently being viewed
- Next to the date time is more playback controls
  - Pause
  - Play forward
  - Next frame
  - Next Sequence
- Next are the Export Controls
  - Set Start/Stop time for exporting video or creating bookmarks
  - Export/Create AVI or Bookmark
  - Download export
  - View Bookmarks
- Lastly are the **Options, Help, and Log Out** icons

